



Trowbridge Health Centre, 72
Wingfield Road, Trowbridge,
Wiltshire BA14 9EN
£8,000 pa

Description

This is an excellent opportunity to lease a retail unit adjoining Trowbridge Health Centre and within the same locality as Wingfield Care Home.

The unit has great potential for a variety of uses (subject to planning), some of which may be connected to the medical profession.

Suggestions:

Flower shop.

Oestopath

Physiotherapist.

Chiropodist.

Hairdressers.

Beauticians

and of course, there will no doubt be others.

(PLEASE NOTE ALL FIGURES QUOTED ARE EXCLUSIVE OF VAT)

Communal parking will be by negotiation.

Deposit: £1,999.99

Main Shop

17'9 x 17'6

Store Room

Kitchen

4'9 x 3'9

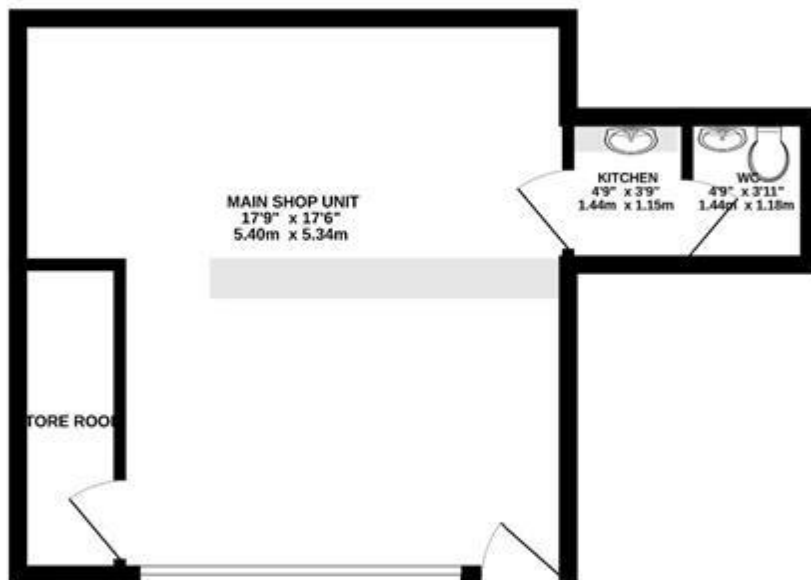
Toilet

Communal Parking

Parking will be by negotiation.



GROUND FLOOR
347 sq.ft. (32.2 sq.m.) approx.



TOTAL FLOOR AREA: 347 sq.ft. (32.2 sq.m.) approx.

While every attempt has been made to ensure the accuracy of the information contained here, measurements of floor, window, beam and any other items are approximate and no responsibility is taken for any error, omission or mis-statement. This plan is for illustrative purposes only and should be used as such for any prospective purchase. The services, systems and appliances shown have not been tested and no guarantee is to their operability or efficiency can be given.
March 2011 - 10/2011

Note: We cannot guarantee the accuracy of this property brochure or the information contained therein and would therefore ask you to satisfy yourself regarding any information.

Paxtons Estate Agents
15 Hackett Place,
Paxcroft Mead,
Trowbridge,
Wiltshire
BA14 7GW

Phone: 01225 777696

Email: enquiries@paxtonsresidential.co.uk

Web: paxtonsresidential.co.uk

VAT registration number - 245 9691 64

